

## American Fuses Forklift Fuses ACK, ACL, ALS



### FORKLIFT TRUCK FUSES

Ferraz Shawmut forklift truck and battery isolator fuses are specially designed for the heavy duty loads associated with DC battery powered equipment such as forklift trucks, hand trucks, motorized work platforms, and other DC battery operated systems. Rugged construction and stud mounted bolt-in design assure long life in adverse conditions for these fuses. This expanded line of Forklift Truck Fuses can fulfill virtually all of your heavy duty circuit protection needs up to 125V AC or DC. The round body ACK, ACL and ALS fuses combine higher voltage ratings and more ampere ratings with higher breaking capacity. The flat CNL and CNN style fuses have a lower voltage rating but are also AC and DC, more space saving and have visual "see-thru" indication to show when they have operated.

### Features/Benefits

- All fuses are AC and DC rated
- Expanded Ampere Ratings
- Time Delay and General Purpose types
- Link is visible through window (CNL/CNN)

### Highlights:

- AC/DC Ratings
- Embossed Catalog Nos.
- Stud Mounted
- Time Delay - ACK
- General Purpose - ACL, ALS

### Applications:

- Forklift Trucks
- Battery Hand Trucks
- Motorized Work Platforms
- Battery Systems

### Forklift Truck Fuse - Cross Reference

Part Number	Competitor name	Gould
ACK	Bussmann	ACK
ACL	Bussmann	ACL
ALS	Bussmann	ALS
ANL	Bussmann	CNL
ANN	Bussmann	CNN
AOK	Edison	ALS
CCK	Littelfuse	ACK
CCL	Littelfuse	ACL
ECK	Edison	ACK
ECL	Edison	ACL
ENLE	Edison	CNL
ENNE	Edison	CNN

### Approvals



- UL Recognized Components (All Products)  
File E60314

### Ratings

- ACK: 1-400 Amperes  
125VAC, 10kA I.R.  
125VDC, 10kA I.R.
- ACL: 30-120 Amperes  
125VAC, 10kA I.R.  
125VDC, 10kA I.R.
- ALS: 100-500 Amperes  
125VAC, 10kA I.R.  
125VDC, 10kA I.R.
- CNL\*
- CNN\*

\*see section "European DIN forklift fuses"

### Forklift Truck Fuse - Fuse Blocks

Fuse	Fuse Block
ACK(70-100)	P243C
ACL(70-120)	P243E



## American Fuses Forklift Fuses ACK, ACL, ALS

### ACK Fuse

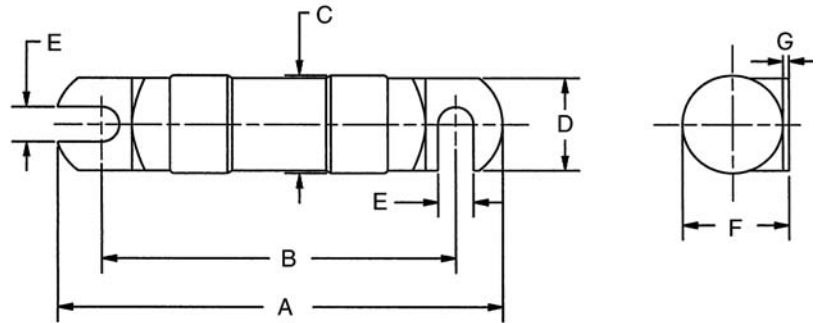
Ampere Rating	Cat. Number	Ref. Number	Ampere Rating	Cat. Number	Ref. Number	Ampere Rating	Cat. Number	Ref. Number	Ampere Rating	Cat. Number	Ref. Number
1A	ACK1	B219421	20A	ACK20	T212767	70A	ACK70	P222630	160A	ACK160	H211216
2A	ACK2	G212250	25A	ACK25	G214297	80A	ACK80	Z201479	175A	ACK175	Y211736
3A	ACK3	J215311	30A	ACK30	M215820	90A	ACK90	J201994	200A	ACK200	G213285
5A	ACK5	Y218383	35A	ACK35	V216839	100A	ACK100	N222629	225A	ACK225	Y213783
6A	ACK6	C219422	40A	ACK40	J217358	120A	ACK120	C223148	250A	ACK250	G214803
10A	ACK10	V219944	50A	ACK50	N218903	140A	ACK140	J200936	300A	ACK300	R216330
15A	ACK15	Y201478	60A	ACK60	W219945	150A	ACK150	H201993	400A	ACK400	R217871

### ACL Fuse

Ampere Rating	Cat. Number	Ref. Number	Ampere Rating	Cat. Number	Ref. Number
30A	ACL30	H212251	70A	ACL70	H214804
35A	ACL35	V212768	80A	ACL80	N215821
40A	ACL40	H213286	90A	ACL90	S216331
50A	ACL50	Z213784	100A	ACL100	J211217
60A	ACL60	H214298	120A	ACL120	Z211737

### ALS Fuse

Ampere Rating	Cat. Number	Ref. Number	Ampere Rating	Cat. Number	Ref. Number
100A	ALS100	W216840	300A	ALS300	X219946
150A	ALS150	K217359	350A	ALS350	Q222631
175A	ALS175	S217872	400A	ALS400	E223150
200A	ALS200	Z218384	450A	ALS450	K200937
225A	ALS225	P218904	500A	ALS500	A201480
250A	ALS250	D219423	-	-	-

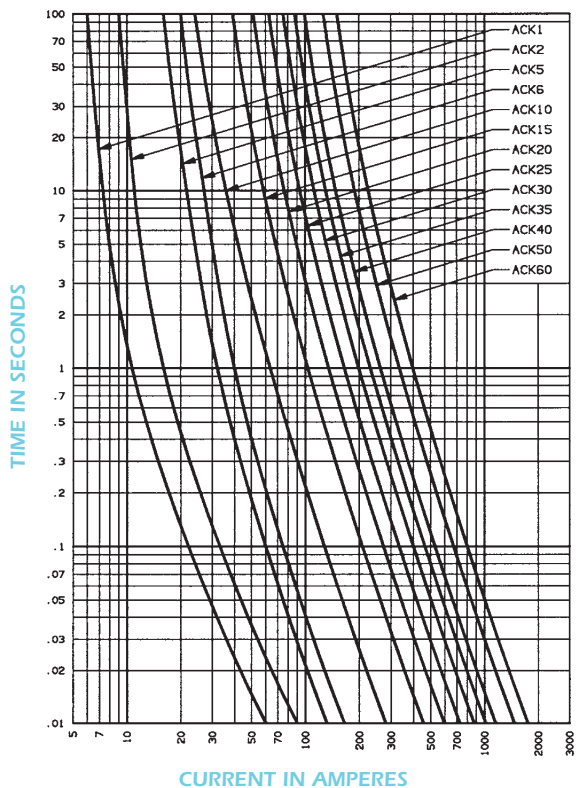


### Dimensions

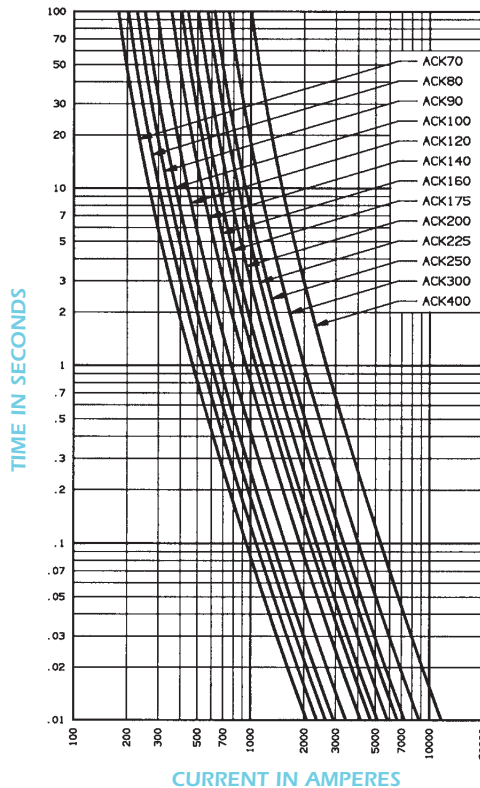
Catalog Number	Outline Figure	A	B	C	D	E	F	G
		In. (mm)	In. (mm)	In. (mm)	In. (mm)	In. (mm)	In. (mm)	In. (mm)
ACK 1-30	1	3.07 (77.9)	2.5 (63.5)	.56 (14.3)	.5 (12.7)	.28 (7.1)	.593 (15)	.03 (.8)
ACK 35-60	1	3.74 (95)	3 (76.2)	.81 (20.6)	.75 (19.1)	.34 (8.7)	.86 (21.8)	.047 (1.2)
ACK 70-100	1	4.46 (113.4)	3.5 (88.9)	1.06 (26.9)	1 (25.4)	.38 (9.5)	1.12 (28.5)	.06 (1.6)
ACK 120-200	1	4.72 (119.8)	3.75 (95.4)	1.06 (26.9)	1 (25.4)	.38 (9.5)	1.12 (28.5)	.06 (1.6)
ACK 225-400	1	4.71 (119.7)	3.75 (95.4)	1.06 (26.9)	1 (25.4)	.38 (9.5)	1.12 (28.5)	.06 (1.6)
ACL 30-60	1	3.07 (77.9)	2.5 (63.5)	.56 (14.3)	.5 (12.7)	.28 (7.1)	.593 (15)	.03 (.8)
ACL 70-120	1	3.49 (88.6)	2.75 (69.9)	.81 (20.6)	.75 (19.1)	.34 (8.7)	.86 (21.8)	.047 (1.2)
ALS 100-500	1	4.71 (119.7)	3.75 (95.4)	1.06 (26.9)	1 (25.4)	.38 (9.5)	1.12 (28.5)	.06 (1.6)

## American Fuses Forklift Fuses ACK, ACL, ALS

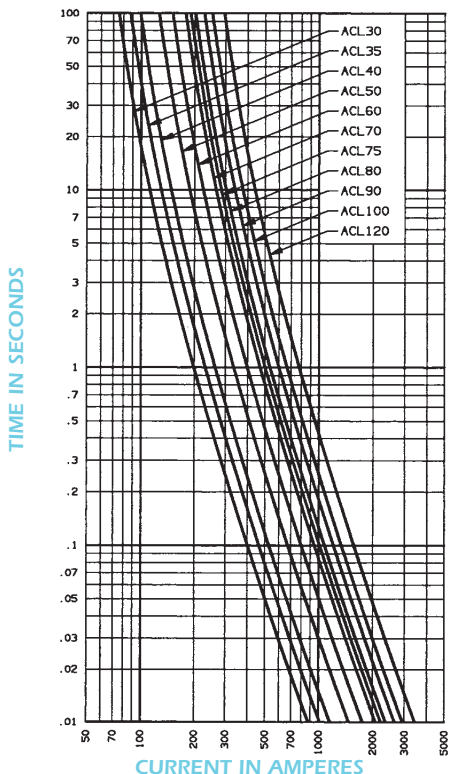
MELTING TIME - CURRENT DATA - ACK1-60



MELTING TIME - CURRENT DATA - ACK70-400



MELTING TIME - CURRENT DATA - ACL30-120



MELTING TIME - CURRENT DATA - ALS100-500

